



*“To live in one land, is captivity;  
to runne all countries a wild roguery”*

**JOHN DUNNE 1896**

Travel is liberating, as true then as it is today, breaking with the familiar to unwind, reset, and explore. At Natural High we take our clients on a journey not to a destination, with every trip tailored to individual needs and interests. This book contains 20 of our most beguiling escapes and we hope you will find something to inspire your next adventure.

We have a trip to the heart of the Central African Republic rainforest in search of lowland gorillas and forest elephants. In the Arctic an expedition to explore the western edges of the Svalbard Archipelago with the BBC crew who produced Blue Planet.

In Morocco walk with nomads in the High Atlas Mountains, track leopards in Rajasthan or get up close to Wild Dogs on the Laikipia Plateau. Delve into chimpanzee

politics in Tanzania's Mahale Mountains, or head to the coastal rainforest of the Masoala Peninsular to look for lemurs and watch exuberant Humpbacks.

The trips are in no particular order; each offers something unique so we hope you'll find something to transport you. As well as all being astonishing places the common theme is that everyone we work with takes their responsibilities to conservation and communities incredibly seriously. Responsible travel is a force for good, empowering people and protecting wildlife and wild places.

We're always here to discuss plans and we'd love to help you make them a reality. Give us a call or drop in to see us to look at maps over a cup of coffee whenever you're ready. In the meantime, here's to many more great escapes.

*Rod Catherine Vanessa*



**NATURAL HIGH**  
SAFARIS & WILDERNESS TRAVEL



026



040



028

# RETURN TO THE WILD

- 1 | *Kenya* 004
- 2 | *Svalbard* 006
- 3 | *Canada* 008
- 4 | *Tanzania* 010
- 5 | *Peru* 012
- 6 | *Botswana* 014
- 7 | *Sri Lanka* 016
- 8 | *Costa Rica* 018
- 9 | *Madagascar* 020
- 10 | *Kenya* 022
- 11 | *India* 024
- 12 | *Kenya* 026
- 13 | *Congo & Central African Republic* 028
- 14 | *Zambia* 030
- 15 | *Brazil* 032
- 16 | *Kenya* 034
- 17 | *Tanzania* 036
- 18 | *Botswana* 038
- 19 | *Namibia* 040
- 20 | *Morocco* 042



*Kenya*

—1—

## ON THE TRAIL OF LAIKIPIA'S WILD DOGS

*Wild dogs are irrefutably the most rewarding predator that you can encounter on foot; endearingly inquisitive, massively social, yet not large or angry enough to eat you.*





Wild dogs are the most ephemeral of mammals - popping-up in an area after months or even years of absence to terrorize the local antelope population before disappearing off again as quickly as they arrived. Packs can literally travel marathon distances day after day. Campfires across Africa are littered with tales of woe from travellers who have just missed seeing this charismatic canid. So where are the best places to find the near-mythical painted wolf?

All the great classic safari countries: Botswana, Zimbabwe, Zambia, Tanzania and Kenya can boast good populations – and although that doesn't mean you'll find them, it's a good start. With home-ranges that can be an astonishing 2,000 sq km the first requirement for the dog's survival is wild empty country, free of highways and fences. To maximize the experience head somewhere where, if you do encounter them, you can interact on foot.

Our top tips are Mana Pools, Zimbabwe; the Luangwa Valley, Zambia and the Laikipia Plateau in Kenya – and of these

Laikipia currently stands out because a couple of the dogs are collared and the guides have access to the tracking equipment, making an encounter an awful lot more likely than merely spending time in good country. Laikipia is also wonderfully devoid of rules so there's the freedom to pursue them on foot or off-road and stay out after dusk, meaning that you can work around the dog's movements, as move they certainly will.

 100% TAILOR-MADE

WHERE?  
KENYA

WHEN TO GO?

JAN	FEB	MAR
APR	MAY	JUN
JUL	AUG	SEP
OCT	NOV	DEC

START YOUR ADVENTURE TODAY +44 (0) 1747 830950



*Svalbard*

—2—

## EXPLORE THE HIGH ARCTIC WILDERNESS OF SVALBARD

*Head to the edges of the globe off the west coast of Svalbard  
with the world's top Arctic wildlife filming guides.*

Just a few hundred miles from the North Pole, the archipelago of Svalbard is breathtakingly wild and redefines any concept you may have of remoteness. Over centuries it has lured adventurers from the Vikings to whalers, coal miners and polar explorers. Today it remains a haven of largely protected land and one of the most important breeding grounds for polar bears. It's also an extreme environment that requires serious expertise and backup, both of which our team provide to an unparalleled level.

For most a visit to Svalbard entails a stay in its peculiar but intriguing capital, Longyearbyen, with short half day trips into the surrounding landscape on foot, by boat, snowmobile or dog sled. While such a trip gives an impression of these remarkable islands, it is ultimately an unsatisfactory experience and likely one you'll share with many others.

To escape all this, our seven-day ocean-based expedition is something altogether different. Based on a private



TAKE ME THERE

ice-rated expedition vessel, you'll head into the beautiful un-spoilt waters off the coast of Western Svalbard, passing vast glaciers and ice filled fjords whilst breaking a passage through the sea ice.

Each morning you will wake to a new vista and a new adventure and guided by world experts you'll have the opportunity to explore at your own pace; walk with walrus, view polar bears, patrol glacial bays by zodiac to look for whales and sleep soundly on your stable vessel at night.

Excellent food and wine will be served by a dedicated expedition chef and plenty of exercise can be had in the form of land expeditions, kayaking, snow machine trips, snowshoe and hiking in remote ice filled bays in the company of your armed guide.

This is a unique and exceptional adventure. If you are interested in taking part in an adventure shaped by the dedicated focus normally applied to a natural history unit wildlife filming trip, then this is the only way to see Svalbard.

 100% TAILOR-MADE

WHERE?

**SVALBARD**

WHEN TO GO?

JAN	FEB	MAR
APR	MAY	<b>JUN</b>
<b>JUL</b>	<b>AUG</b>	SEP
OCT	NOV	DEC

START YOUR ADVENTURE TODAY +44 (0) 1747 830950

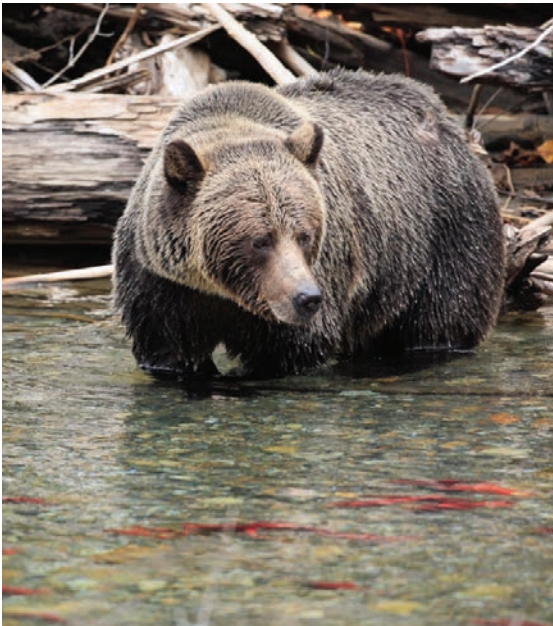


Canada

— 3 —

## TRACK GRIZZLIES IN THE FORESTS OF BRITISH COLUMBIA

*Follow grizzlies on foot in the ancient mountains  
and forests between Vancouver and Calgary.*



In bear country, signs of bears are everywhere. Tree rubs, claw marks, freshly killed salmon heads, fresh tracks in the mud – you'll be surprised how quickly your eye begins to notice these details as you walk and become one with the forest. Tracking grizzly bears in the Selkirk mountains with an expert guide is a true learning experience and one that will live long in the memory.

Rise early and strike out into the ancient hemlock forests, skirting jade waters flecked with red salmon in search of fresh bear tracks. Visit in September and October when the fall colours arrive, and you'll see the rich greens of the primordial hemlock forests and the autumnal tones of the mountains studded with bright yellow larch.





TAKE ME THERE

At this time of year, your guides will take you high into the mountains to track and view the high-elevation grizzlies feeding on berries. All bear viewing is completely authentic and real, there are no viewing platforms or stands, instead it is an un-scripted experience that moves quietly and slowly through the wild habitat, following tracks and trails in search of the grizzlies in their own environment.

This trip is ideal for active families (aged 14+) who are passionate about experiencing true wilderness together on foot and with the chance to view totally wild grizzly bears in their natural habitat.

 100% TAILOR-MADE

WHERE?

CANADA

WHEN TO GO?

JAN	FEB	MAR
APR	MAY	JUN
JUL	AUG	SEP
OCT	NOV	DEC

START YOUR ADVENTURE TODAY +44 (0) 1747 830950



Tanzania

— 4 —

## WAY OUT WEST

*Combine remote Katavi with the ultimate chimpanzee experience in the awe inspiring Mahale Mountains – book early as this is not one to be missed.*

Five hundred miles west of Arusha, next stop the Congo. This part of Tanzania offers vanishingly few tourists and unrivalled wildlife, including arguably Africa's best chimpanzee experience and two of Tanzania's most remote pioneering camps.

Were it not for the inaccessibility of this part of Tanzania, Katavi and Mahale would doubtless be among the best known parks in Africa, so rich and complementary are their offering.





The dry savannah of Katavi is home to legendary herds of buffalo and myriad other plains game that graze in constant motion in the shimmering heat of Katavi's plains. Its fragile rivers seem too small to be of significance at first glance, but attract bewildering concentrations of hippopotami, not to mention lion and other carnivores drawn to natural ambush spots. Meanwhile elephant are frequent visitors while staying at the wonderful Chada Camp, with its timeless and stylish campaign tents under deep shady trees.

Contrast all of this with the crystal turquoise waters of Lake Tanganyika and the rich green of the Mahale Mountains a short flight away. This is home to not only the habituated chimpanzees of the M group but eight other species of primate and countless other forest inhabitants.

✓ 100% TAILOR-MADE

WHERE?

TANZANIA

WHEN TO GO?

JAN	FEB	MAR
APR	MAY	JUN
JUL	AUG	SEP
OCT	NOV	DEC

START YOUR ADVENTURE TODAY +44 (0) 1747 830950



*Peru*

— 5 —

## PERU'S ANDES AND AMAZONIA

*Few places on earth can boast the biodiversity of Peru and while it is one thing to hold an enormous inventory it's quite another to access it.*

*Many of the planet's richest natural cornucopias are almost impossible to reach – happily in Peru this is no longer the case and with a good road network and reliable internal flights between mountain towns and jungle outposts, it's possible to interweave culture and wildlife into a single journey.*



Long synonymous with the Inca ruins of Machu Picchu, Peru offers an enormous amount beside – perhaps most surprising is the great chunk of Amazonian Rainforest which boasts wildlife encounters every bit as good as those in Brazil.

Straddling the Andes, the two slopes are massively contrasting, the western side is desert dry with any moisture perpetually sucked out by the freezing Humboldt current pushing up from the deep south Pacific. The eastern slopes are warm and humid and are the headwaters of the Amazon. Much of Eastern Peru is little more than 300m above sea level, despite being 2,500kms from the Atlantic Ocean.

 100% TAILOR-MADE

**WHERE?**  
**PERU**

**WHEN TO GO?**

JAN	FEB	MAR
APR	MAY	JUN
JUL	AUG	SEP
OCT	NOV	DEC

TAKE ME THERE



For anyone with even the most fleeting interest in birds, Peru is a constant and varied delight. You could have an eye-level encounter with an Andean condor, its wingspan greater than the gargantuan marabou, at the impressive Colca Canyon – or just spot them incidentally out on the Altiplano, along with flamingos on ice. Down in Amazonia clay-licks attract scores of macaws and parrots while jaguar, tapir, anaconda, tarantulas, turtles, capybaras and caimans are amongst the non-avian fauna that can be sought out.

The Peruvian jungle is not a particularly comfortable place, it is hot and sticky and there's a long list of creatures that jump, fly, buzz, sting and bite – to live here would be a challenge to even the most resilient, but to be able to dip in to it, to visit this other world for a few days before returning to the more comfortable climes of Cuzco or Lake Titicaca, highlights the enormous privilege it is to live in this day and age with access to such extraordinary encounters.

**START YOUR ADVENTURE TODAY +44 (0) 1747 830950**



*Botswana*

— 6 —

## LOSE THE HORIZON ON THE MAKGADIKGADI PANS

*The Makgadikgadi Pans in Eastern Botswana  
are a surreal desert environment, a world away  
from the better-known Okavango Delta.*





✓ 100% TAILOR-MADE

WHERE?  
**BOTSWANA**

WHEN TO GO?

JAN	<b>FEB</b>	<b>MAR</b>
<b>APR</b>	MAY	JUN
JUL	AUG	SEP
OCT	NOV	DEC

TAKE ME THERE

To stand on the edge of the vast salt pans at Makgadikgadi is to experience true silence and a bewildering sense of space, where land and air blend into a vast, elusive horizon. The 16,000 square kilometre pans were formed when an inland lake the size of Switzerland dried up tens of thousands of years ago. The first impression is one of absence; absence of water, of life, of sound. This other-worldly sensation, enhanced by the presence of numerous prehistoric stone tools that litter the lakebed. But as is often the case, the facts - and the pans - are not as monochrome as they first appear. Desert specialists thrive in the grasslands surrounding this harsh environment and a morning spent in the company of habituated meerkats is one you won't quickly forget. Come the rains, the entire place is transformed by the arrival of the zebra migration, not to mention thousands of migrant birds. Despite the draw of this spectacle, the sheer peculiarity of pans in the dry season makes it our favourite time. Spend a few days at the beautiful San Camp after experiencing the liquidity of the Okavango Delta and it's like pressing the reset button; calming and deeply energizing.

START YOUR ADVENTURE TODAY +44 (0) 1747 830950



*Sri Lanka*

— 7 —

# EXPLORE THE REMOTE WILDERNESS OF GAL OYA NATIONAL PARK WITH THE FOREST DWELLING VEDDA PEOPLE

*Deep in the central wilderness of this tear drop island,  
lies Gal Oya National Park, home to the last of the Vedda  
people, among the earliest inhabitants of Sri Lanka.*





Set in 25,000 hectares of unspoilt evergreen forest and open savannah, Gal Oya is one of Sri Lanka's least visited National Parks. Walking with the Vedda chieftains here, through the jungles of their ancestors, the forest is brought alive with tales of their hunter gatherer lives, ancient cave dwellings and forest medicines.

Cradling Senanayake Samdura the country's largest lake and the only place you can undertake a water safari, this is a beguiling and mystical wilderness. Board a boat armed with binoculars and look out for critters great and small, from Water Buffalo and Wild Boar to sloths, langur and leopards. The star attraction however are the aquatic Asian Elephants that regularly swim, trunks held high like periscopes, between the islands to forage.

Geographically separated from the mainland, many species in Sri Lanka have evolved in isolation. Numbers defy rationalisation, more leopards than anywhere else on earth, 123 species of mammals and the richest diversity of amphibians in the world. Encompassing the timeless temples; the Hill Country and tea plantations, where echoes of colonial life still sound; the beaches; forest reserves and mountains, this is a country - barely the size of Ireland - of enormous variety which captivates and intrigues.

✓ 100% TAILOR-MADE

WHERE?

SRI LANKA

WHEN TO GO?

JAN	FEB	MAR
APR	MAY	JUN
JUL	AUG	SEP
OCT	NOV	DEC

TAKE ME THERE



START YOUR ADVENTURE TODAY +44 (0) 1747 830950



*Costa Rica*

— 8 —

## HIDDEN COSTA RICA - THE OSA PENINSULA

*Jutting into the Pacific, this far south-western corner of Costa Rica was once an island, evolving in isolation before merging with the mainland - and it still maintains an air of wild isolation.*

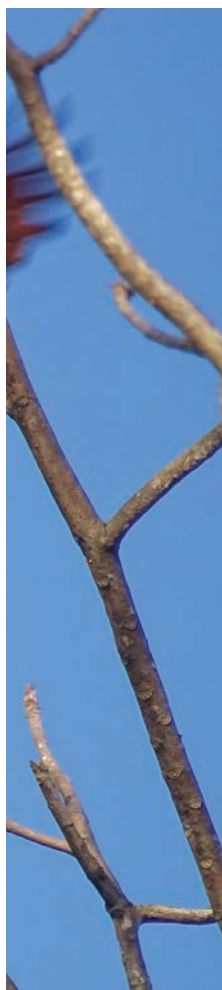




This is Costa Rica at its most intrepid – where the green of the coastal rainforest meets the deep blue ocean. Dominated by Corcovado, the country’s largest national park and considered the crown jewel among an impressive collection of protected areas – the diversity here is not surpassed by any region of a similar size anywhere.

A fairy-tale of pristine beaches, magical waterfalls, mangroves and dense jungle alive with tropical birdlife and home to all Costa Rica’s big cats and other mammalian highlights. This is the best place on the planet to see a tapir which wallow in waterholes during the heat of the day while four species of monkey – squirrel, spider, howler and capuchin – make their way through the canopy.

A particular pleasing aspect of Osa Peninsula is that it’s best explored on foot. Arriving at a Corcovado ranger station after a fairly sporty powerboat transfer from Drake Bay, two jungle trails head either coastal or inland. Escorted by an obligatory – and guaranteed knowledgeable – guide, it is possible to traverse the whole peninsula. While the accommodation is fairly spartan in parts, the upside of accomplishing a real, uncontrived journey in this age of instant gratification is increasingly hard to find.



 100% TAILOR-MADE

**WHERE?**  
**COSTA RICA**

**WHEN TO GO?**

JAN	FEB	MAR
APR	MAY	JUN
JUL	AUG	SEP
OCT	NOV	DEC

START YOUR ADVENTURE TODAY +44 (0) 1747 830950



*Madagascar*

— 9 —

## MADAGASCAR'S HUMPBACK MIGRATION

*The most ebullient of all the whales, with their amazing exhibitions of full-body breaching and tail slapping, Humpbacks are also wonderfully habitual, appearing like clockwork in some of the most interesting corners of the earth.*

The great expanse of unspoilt coastal rainforest on the Masoala Peninsular is wild Madagascar at its very best – a pristine jungle alive with lemurs, chameleons and birds. From June to September these warm waters are also home to large numbers of humpback whales who come inshore to breed and calve - and in doing so put on an awe-inspiring display.

Most people fly here, but if you are looking for true adventure consider driving the Route Nationale 5 – dubbed 'the worst highway in the world'. With multiple river fordings and beyond rickety bridges, it's more of a glorified footpath than a road, but the coastal vistas are truly breath-taking and you're assured multiple whale sightings in what has to be the epitome of 'off-grid'.

 100% TAILOR-MADE

WHERE?  
**MADAGASCAR**

WHEN TO GO?

JAN	FEB	MAR
APR	MAY	<b>JUN</b>
<b>JUL</b>	<b>AUG</b>	<b>SEP</b>
OCT	NOV	DEC

TAKE ME THERE



START YOUR ADVENTURE TODAY +44 (0) 1747 830950



*Kenya*

—10—

## OUT OF RANGE IN THE MATTHEWS RANGE

*A truly off the beaten track experience in stunning scenery,  
exploring wildlife on foot and immersion in the local culture.*





✓ 100% TAILOR-MADE

WHERE?  
**KENYA**

WHEN TO GO?

JAN	FEB	MAR
APR	MAY	JUN
JUL	AUG	SEP
OCT	NOV	DEC

TAKE ME THERE

The owner-run Sarara Camp is located in the Namunyak Wildlife Conservancy, an area of 850,000 acres of unspoilt wilderness in the Matthews Range in Northern Kenya. The terrain is a mixture of savannah plains and lush mountains, in which you'll find elephant, leopard, reticulated giraffe, wild dog and kudu. This remote and dramatic landscape is also home to the local Samburu people whose age-old traditions, including the famous 'singing wells' are as much a part of the fabric of the area as the wildlife.

Close to the camp is a traditional Samburu village, where you'll be warmly greeted by people and learn about their everyday lives.

A stay at Sarara really touches your heart because of the warmth of the people, its dramatic scenery and complete remoteness.



START YOUR ADVENTURE TODAY +44 (0) 1747 830950



*India*

—11—

## TRACK LEOPARD WITH PASTORALISTS IN RAJASTHAN

*With an absence of monuments this part of Rajasthan is off the usual beaten path and offers a unique wildlife experience without the crowds.*

In the foothills of the ancient Aravalli Range in Northwest India, nomads and big cats peacefully coexist like nowhere else in the world.

The landscape of towering granite mounds and craggy outcrops that rise up from a patchwork of scrubby thickets and small sown fields is the perfect habitat for leopard. The chance of spotting





TAKE ME THERE



them here is among the highest in India, especially with expert naturalists and trackers to guide you. The pioneering Jawai Camp is part conservation project, part stylish lodging and as well as tracking leopard there's the chance to learn about local initiatives while staying in one of the ten luxury tents without any compromise on comfort.

Explore by Jeep in the early morning and late afternoon to see antelope, crocodile and migratory flamingo and cranes at the nearby lake. Walk with crimson turbaned semi-nomadic Rabari shepherds for a privileged insight into an age-old way of pastoral life.

 100% TAILOR-MADE

WHERE?

INDIA

WHEN TO GO?

JAN	FEB	MAR
APR	MAY	JUN
JUL	AUG	SEP
OCT	NOV	DEC

START YOUR ADVENTURE TODAY +44 (0) 1747 830950



*Kenya*

—12—

## MOUNT KENYA ON HORSEBACK

*The ultimate means to explore the beauty and variety of the forests, moorlands lakes and waterfalls around Africa's second highest mountain.*

Standing at 5,199m this magnificent mountain features a kaleidoscope of landscapes from dense, ancient forest and rugged moorlands to snow-capped peaks and icy tarns. Uniquely however and in contrast to its alpine characteristics, it is also home to many of Africa's iconic wildlife species such as buffalo, zebra, eland, elephant and leopard. In a land where roads

are non-existent, there really is no better way to discover the magic of this ancient, unspoilt wilderness than from the back of a horse.

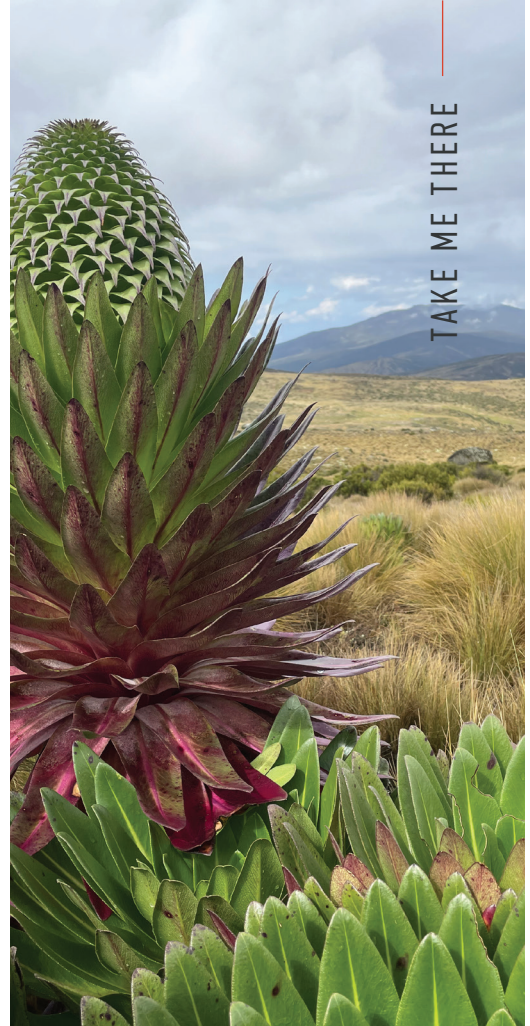
Horse safaris on Mount Kenya are aimed at accomplished riders looking to spend up to six or seven hours a day in the saddle. Most of the equipment and supplies are carried





by pack horses which allows for a truly wild experience. Every safari is tailor made to suit each group and there are different options to choose, from state of the art alpine expedition tents, to a luxury tented camp equipped with a large mess tent with log burner and a hot water shower - the ultimate luxury after a long day on horseback. These mobile camps can be incorporated along with farm stays and cosy log cabins.

Should you have an urge to summit Mount Kenya then hiking to Lenana, Mount Kenya's third highest peak, or even climbing Batian or Nelion (previous rock-climbing experience essential) can be incorporated into the safari – as can fly fishing and helicopter flights.



TAKE ME THERE

 100% TAILOR-MADE

WHERE?  
KENYA

WHEN TO GO?

JAN	FEB	MAR
APR	MAY	JUN
JUL	AUG	SEP
OCT	NOV	DEC

START YOUR ADVENTURE TODAY +44 (0) 1747 830950



## *Congo & Central African Republic*

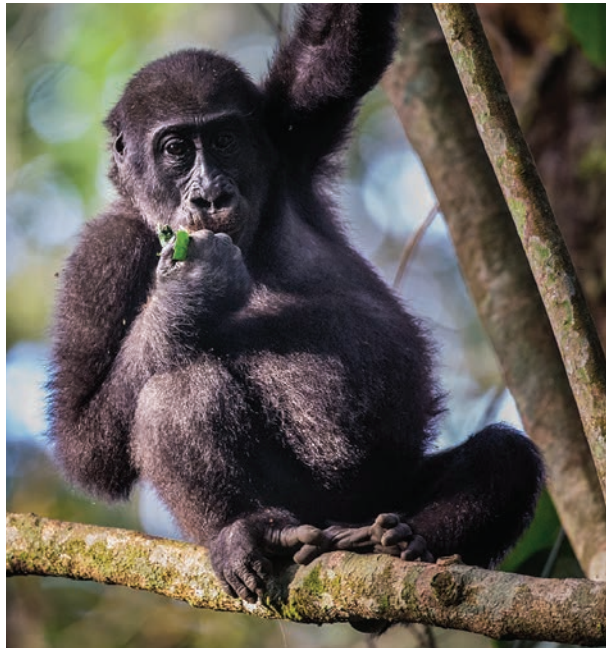
—13—

# UNDER THE CANOPY IN THE FORESTS OF CENTRAL AFRICA

*Anyone with a strong interest in African mammals will be staggered by the magnificence of the Congo Basin and there is a workable means to do so. Travel quickly and safely deep into the heart of the jungle. By using a combination of light aircraft, motorboat, canoe, Jeep and walking this incredible journey grants access to a multitude of ecosystems and wildlife hitherto out of reach to all but the most determined and fortunate.*

The Congo Basin is famously both incredibly rich and largely inaccessible; however, this pioneering safari allows access to two of the region's most outstanding wildlife areas. Odzala National Park in Northern Congo-Brazzaville

provides an oasis of tranquillity in a troubled region and has been successfully protecting this ecosystem's mega-fauna for decades. Uniquely, the gorilla tracking here is undertaken in the company of Dr Magda Beremejo's team of researchers.





Dzanga Bai in the Southern Central African Republic is a natural clearing in the middle of the rainforest where forest elephants gather in large numbers to drink the mineral-rich water that bubbles out of the Bai. The elephant herds are regularly joined by other, normally shy, forest creatures such as bongo, giant forest and red river hogs, forest buffalo and sitatunga, creating a wildlife vista beyond compare. Dzanga Bai has long been on the radar of many a serious safari aficionado but outrageously challenging logistics foiled most attempts. Now, accessing Dzanga-Sanga is possible by taking a short flight from Odzala to the northern town of Kabo and then travelling half a day up the Sangha River.

The combination of a week in Odzala and four nights in Dzanga-Sanga offers unparalleled access to the Great African Rainforest and its wildest inhabitants.

✓ 100% TAILOR-MADE

WHERE?  
CONGO

WHEN TO GO?

JAN	FEB	MAR
APR	MAY	JUN
JUL	AUG	SEP
OCT	NOV	DEC

START YOUR ADVENTURE TODAY +44 (0) 1747 830950



Zambia

—14—

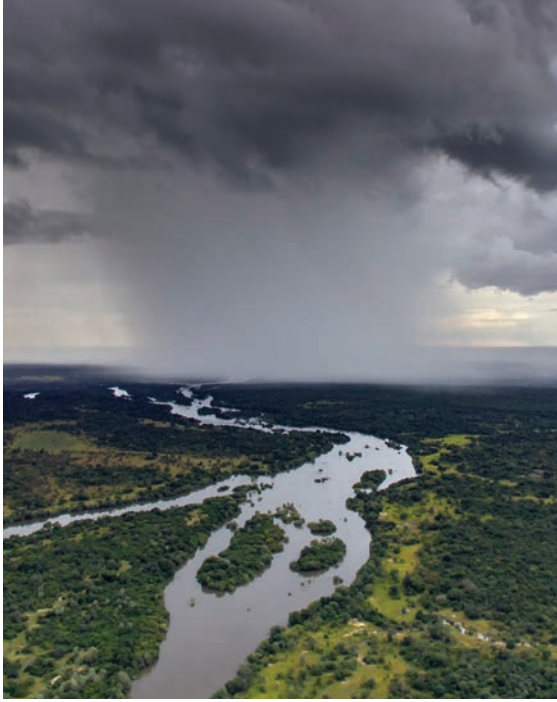
## KAFUE'S BEAUTIFUL SOUTH

*Try putting a scale on visitor numbers: 'busy' ... 'popular' ... 'esoteric' ... 'off-beat' then there's Southern Kafue.*

The Kafue National Park is famous for its size (bigger than Wales) but receives a tiny number of visitors annually. The lion's share (sorry) of these will head up to the far north and the Busanga Plains, famed for its tree-climbing lions, cheetah and other big-hitters. Meanwhile, over 200 kilometres to the south in the tail end of the park, the big cats and the big game still occur in good numbers, but with a fraction of the visitors and a fraction of tiny equals virtually none.

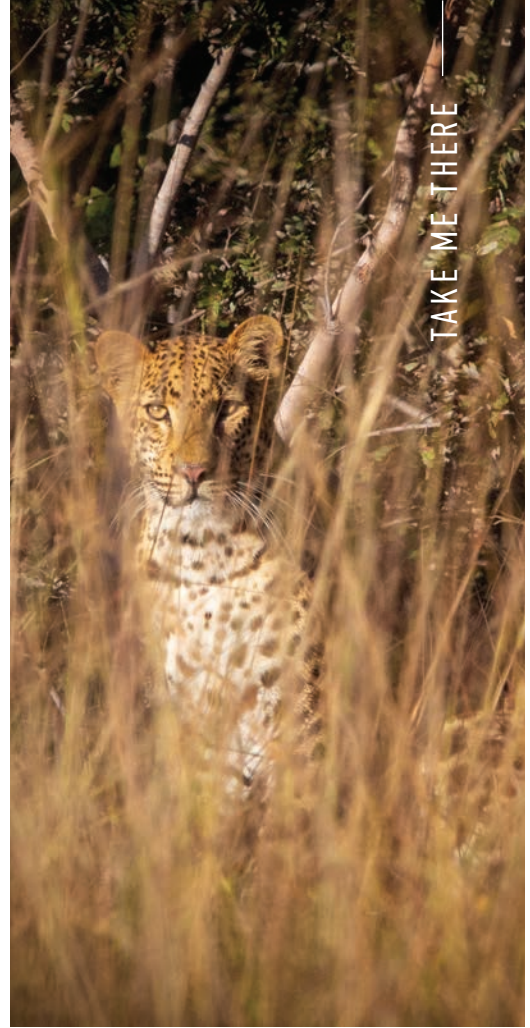
Being able to travel all day and not encounter anyone else is a deeply pleasing experience for the purists and misanthropes amongst us but not necessarily great news for conservation. Remote safari camps have a well proven record in protecting against poaching, yet to survive they need at least a trickle of guests. Flying in the face of standard economics, Steve and Cindy Smith have been operating the rather lovely Nanzhila Plains Camp in the deep south





of the Kafue for over a decade, maintaining a presence and an awareness of an area that has been overlooked for far too long. The teak forest, mopane woodland and riverine thicket of the deep south are all habitat not found further north and provide shelter to a myriad of creatures, great and small. Therefore, we were delighted when the Smiths announced the launch of Nanzhila Lake Camp on the shores of Lake Itezhi Tezhi in 2020. This creates a hugely rewarding journey through the southern half of the Kafue incorporating the most beautiful stretch of river, the game-rich pastures of the lakeshore and the fascinating southern pans, which are an easy half-day drive from Livingstone and the Victoria Falls.

We predict that it may be some time before the Southern Kafue receives the numbers of visitors that it deserves and so, for anyone for whom not encountering other people is as important as seeing great game, it will remain a shoe-in. What has changed is there are now some excellent owner operated camps run with real passion and soul.



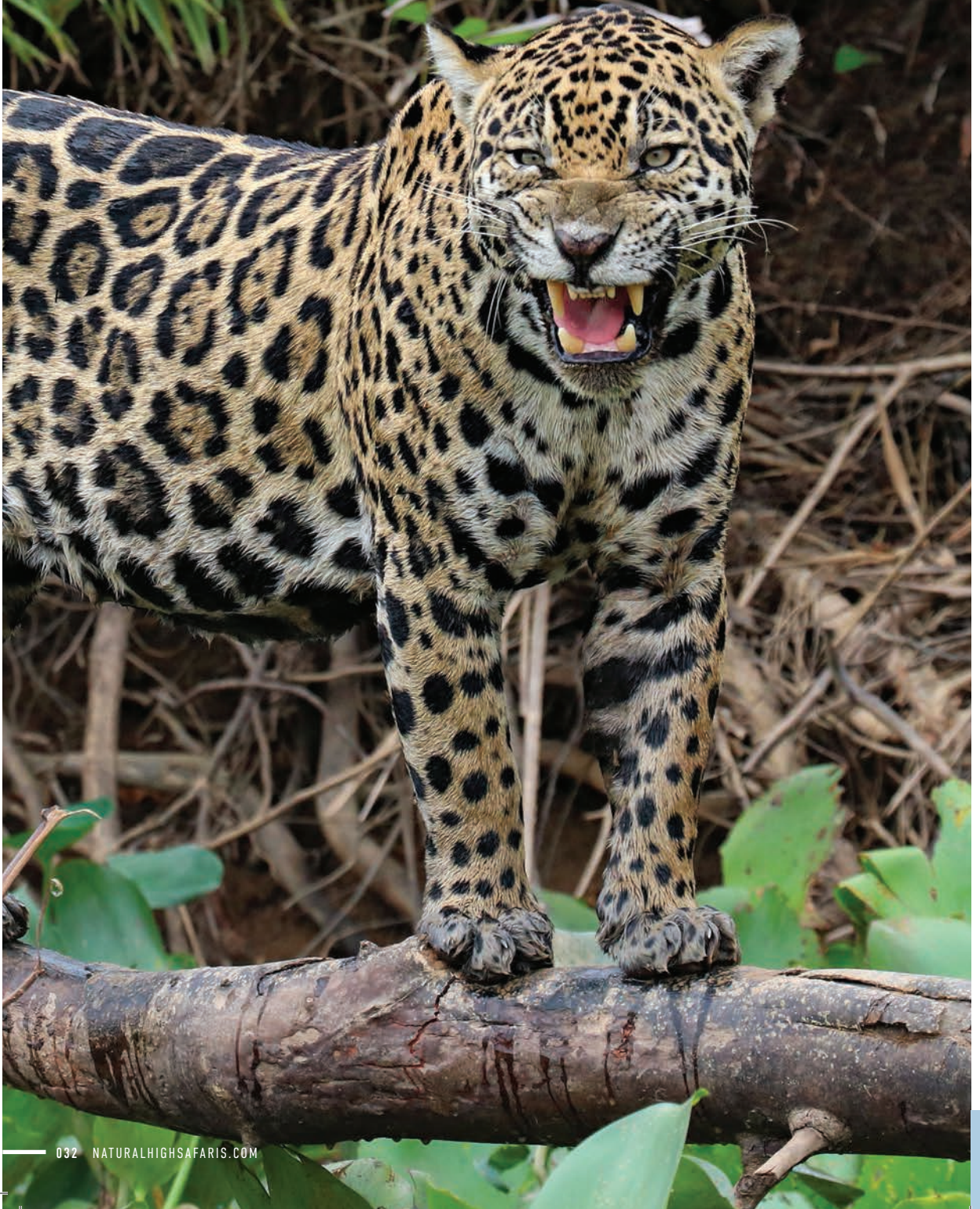
 100% TAILOR-MADE

WHERE?  
ZAMBIA

WHEN TO GO?

JAN	FEB	MAR
APR	MAY	JUN
JUL	AUG	SEP
OCT	NOV	DEC

START YOUR ADVENTURE TODAY +44 (0) 1747 830950





Brazil

—15—

## BIG CATS IN THE PANTANAL

*Located in the heart of South America, this is the world's largest wetland covering 210,000sq km. The open marshes are home to a huge variety of wildlife including the highest density of jaguars anywhere in the world.*

The paradox that is the Pantanal – you might assume that if you want the best chances of encountering the big mammals of South America you'd be best off heading deep in to pristine Amazonian rainforest. The enormous wetlands of Southern Brazil, known as the Pantanal, however, are likely a much better bet. Home to the largest and healthiest jaguar populations on the planet, the odd thing about the Pantanal is that it's not officially protected, nor particularly pristine, being instead a patchwork of gargantuan ranches. This is savannah rather than jungle and because of that the wildlife is a whole load more visible. It's also flat and wet – there are an estimated ten million caimans here, making it the highest population of crocodilians on earth – fortunately caimans have a completely different temperament to their African and Australian cousins and are virtually no threat to man.

We recommend getting under the skin of this amazing ecosystem by embracing the ranch-life and spending time on a working Fazenda as a homestay. Here your hosts are likely to be third or fourth generation residents of the Pantanal who'll have a unique insight in to both the history and

the natural history of the area. The juxtaposition of a giant ant-eater, large, slow, diurnal, myopic - and hence very approachable – brazenly wandering through a paddock of horses, or flocks of critically-endangered blue-and-yellow macaws (the world's largest parrot) coming to roost in palm trees above the farm house each evening, are proof if ever we needed it that indigenous wildlife can thrive in areas other than national parks. And while the buildings may be solid and fence-lines often visible, make no mistake you're properly off-grid here – any human neighbours are likely many hours drive away, much of it through knee-deep water, all sorts of exotic beasts – ocelot, tapir, maned wolf – will be closer, living wild and the rivers teem with piranha and dorado.

 100% TAILOR-MADE

WHERE?

**BRAZIL**

WHEN TO GO?

JAN	FEB	MAR
APR	MAY	<b>JUN</b>
<b>JUL</b>	<b>AUG</b>	<b>SEP</b>
<b>OCT</b>	NOV	DEC

START YOUR ADVENTURE TODAY +44 (0) 1747 830950



Kenya

—16—

## LAKE TURKANA: JOURNEY TO THE JADE SEA

*Totally treeless with jade-green water, Turkana has long held a strong allure for travellers seeking other-worldly places. A savagely beautiful region, where thousands of crocodiles and fish larger than men make the lake their home, while an eclectic collection of desert-specialists roam the shore. Fossils of colossal trees, ancient mammals and early man lie scattered in the sands, suggesting that this has always been an extraordinary part of the world.*

That Kenya, a country with long established tourism, can offer truly off the beaten track adventure is perhaps counter-intuitive – the reality is, it does so in spades. Journeying up to Lake Turkana is a case in point, here it's unlikely you'll see another vehicle, let alone outsider, for days.

Lake Turkana is not small; it's Africa's fifth largest lake with a shoreline longer than Kenya's coast. Despite this it was unknown to the outside world until Count Teleki and Lieutenant von Höhnel stumbled upon it in March 1888. To give that fact some perspective, Burton and

Speke had mapped Africa's Great Lakes and Livingstone described the Victoria Falls three decades earlier; while Stanley had completed a full east-west traverse of Africa from Mombasa and down the Congo to the Atlantic 11 years prior. The reason that Lake Turkana went unnoticed for so long, despite the best efforts of the incessant explorers, is the harsh environment it lies in – it is the world's largest desert lake, and even today it remains a place best visited by launching an expedition from the more habitable south. To do so takes a couple of landcruisers and a particular





set of skills, self-reliance is essential here as there are very few folk around should things go wrong. The real beauty of this trip is to be in truly untrampled country and by necessity the fly-camping is a fairly stripped-down affair with not a lot of non-essential luxuries thrown-in. There is however a huge amount to take in on the long drives through these wild lands highlighting just how disparate Kenya's wildlife estate is.

Were Teleki and Höhnel to return to the lake today, they'd likely be amazed by how little has changed. Indeed there was possibly a higher density of people here one-and-a-half million years ago when Turkana Boy walked these shores – this really is a place time forgot. The tough tribes that do eke out a living here are fierce traditionalists who continue to live in incredibly rudimentary dwellings and fish from 'boats' made from a couple of palm tree trunks lashed together. There's no asphalt, no powerlines – just the occasional aircraft passing high overhead to remind you what century you're in.

 100% TAILOR-MADE

WHERE?  
KENYA

WHEN TO GO?

JAN	FEB	MAR
APR	MAY	JUN
JUL	AUG	SEP
OCT	NOV	DEC

START YOUR ADVENTURE TODAY +44 (0) 1747 830950

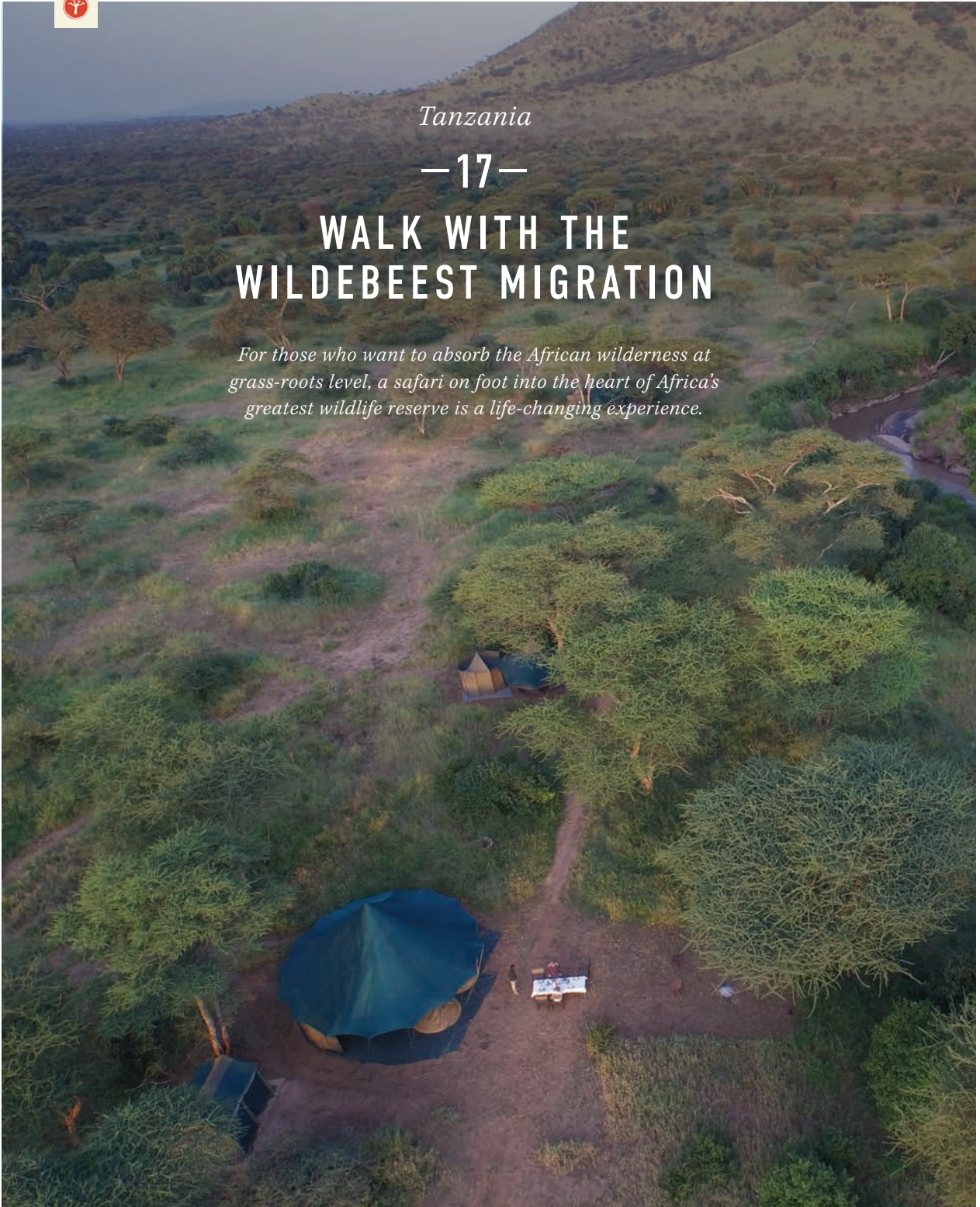


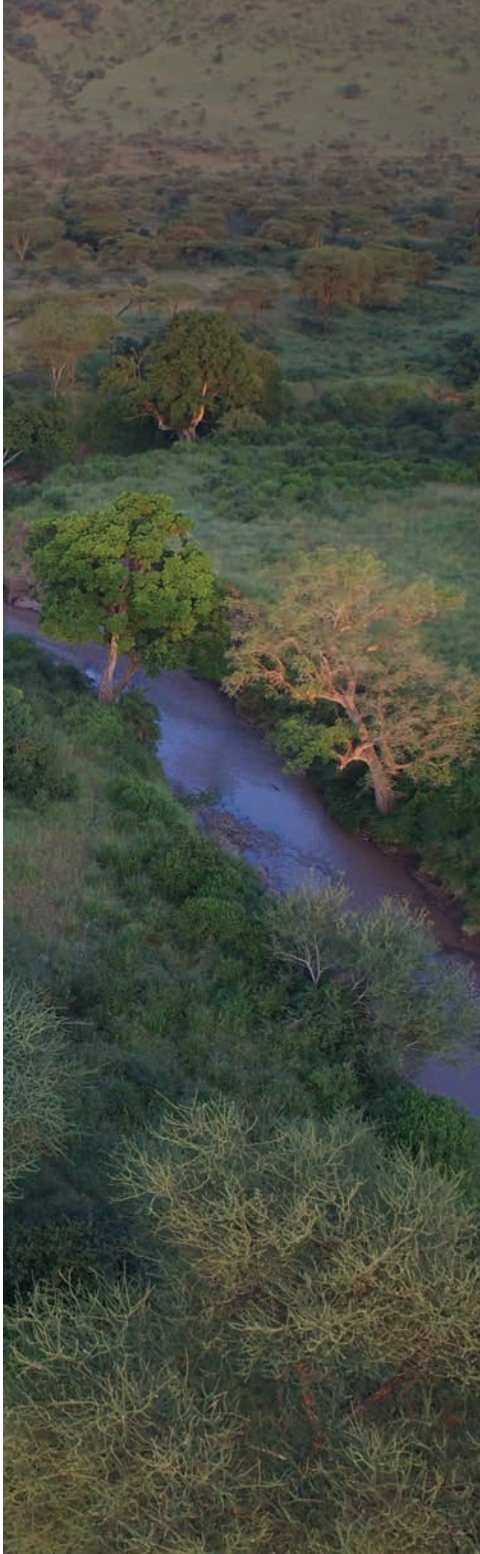
Tanzania

— 17 —

## WALK WITH THE WILDEBEEST MIGRATION

*For those who want to absorb the African wilderness at grass-roots level, a safari on foot into the heart of Africa's greatest wildlife reserve is a life-changing experience.*





✓ 100% TAILOR-MADE

WHERE?

TANZANIA

WHEN TO GO?

JAN	FEB	MAR
APR	MAY	JUN
JUL	AUG	SEP
OCT	NOV	DEC

TAKE ME THERE

The Serengeti is one of the best-known parks in Africa. It's world renowned for the annual wildebeest migration involving millions of animals and it's one of the best places in Africa to see all of the major mammal species – and to see them well. Part of its attraction is the enormous scale and accessibility of the landscape and this has made it a magnet for wildlife researchers who have studied lion and numerous other key species here for this very reason. But few people realize that it's also possible to do proper walking safaris in the Serengeti. This is chance to switch from macro landscape to micro; to quietly explore river lines, to get in amongst the large shady trees, stop, listen and look. To track and find browsing elephant away from any other people. Climb rocky kopjes at dawn to savour a hot cup of coffee in the chill air and scan for game. Embrace the peace and change of pace that comes from leaving a vehicle behind and the slow rhythm that builds as your eyes and ears open more each day of the walk. Spend three nights walking in the Serengeti and you'll feel like you've dropped off the map for a month.

START YOUR ADVENTURE TODAY +44 (0) 1747 830950



*Botswana*

—18—

## A PRIVATE EXPEDITION THROUGH THE OKAVANGO DELTA

*Strike out into the game-rich wilderness of the Delta with a private mobile camp – explore the waterways by boat and walk amongst big game on a sensational off-grid safari.*

The Okavango Delta is without doubt a strong contender for the most beautiful and game-rich wilderness area on the planet – impossibly beautiful blue waterways, fringed with palm trees and teeming with elephants, buffalo and lions. But despite a trend towards ever increasing opulence among Botswana's fixed lodges, proper adventure is alive and well in the Delta. You just need to know where to go.



✔ 100% TAILOR-MADE

**WHERE?**  
**BOTSWANA**

**WHEN TO GO?**

JAN	FEB	MAR
APR	MAY	JUN
JUL	AUG	SEP
OCT	NOV	DEC

TAKE ME THERE

We're proud to work with a handful of Botswana safari outfitters whose focus has remained very much on what's outside the tent. That's not to say you'll be uncomfortable, walk-in tents with proper beds and hot showers are all provided – just not weighed down by unnecessary accoutrements.

To us, the ultimate luxury on safari is to be in pristine wilderness with lots of wildlife and no-one else around – and as unlikely as this may sound in a place as renowned as the Okavango, it really is still achievable. Taking a private mobile camp, heading into the Delta by boat and camping on islands is a Robinson Crusoe experience par excellence. Explore the channels by boat or walk amongst big game, how you spend your time is entirely your call. Enjoy the simple pleasures, a pot of coffee boiling on the campfire as the dawn breaks and bird song heralds the start of another exciting day in the bush and the adventures ahead.



**START YOUR ADVENTURE TODAY +44 (0) 1747 830950**





*Namibia*

—19—

## CASTAWAY ON AFRICA'S REMOTEST BEACH

*As an off-grid experience it's hard to get more elemental than this. North-western Namibia is renowned for its stunning desert landscapes and extraordinary colours.*

An astonishingly stylish camp sits on Namibia's Skeleton Coast overlooking the dramatic waters of the South Atlantic and surrounded by dune fields and pristine desert. A true oasis in one of Africa's least hospitable environments.

Part of the appeal of visiting such extreme environments is the fascination that comes with knowing such places are – like the deep sea – intrinsically hostile to human life, so to spend time here is in some ways to defy the laws of nature.

Shipwreck Lodge turns this on its head creating a sophisticated haven from which to explore this remarkable part of Africa. A stay here is part immersion in desert landscape, part extreme beach picnic with trips to nearby seal colonies and part desert game viewing extraordinaire, with chances to track and observe the remarkable animals that survive in this region; desert adapted elephant and rhino, brown hyena, oryx and Hartmann's mountain zebra among others.

 100% TAILOR-MADE

WHERE?

NAMIBIA

WHEN TO GO?

JAN	FEB	MAR
APR	MAY	JUN
JUL	AUG	SEP
OCT	NOV	DEC

START YOUR ADVENTURE TODAY +44 (0) 1747 830950



*Morocco*

—20—

## ROAM THE ATLAS WITH BERBER NOMADS

*Explore the wilds of Morocco's Atlas Mountains in the company of nomadic pastoralists. Leave the modern world far behind with a private camp, transported by pack animals in a tradition that goes back centuries.*

Just a short hop from Europe, the High Atlas Mountains of Morocco offer vast tracts of wilderness that are among our favourite places to explore on foot. These mountains are home to nomadic pastoralists – the Ait Atta – for whom life has remained resolutely and proudly unchanged for generations. Each spring the Ait Atta leave the deserts of the Jebel Saghro for the migration to pasture grounds in the mountains. To travel with an Ait Atta family over ten days is a remarkable privilege and holds a mirror to the materialism that defines our own world. To spend time walking with the Ait Atta is to remember how to savour the present moment. It's something many of us have forgotten to do in our daily lives, and it's deeply good for the soul.

✓ 100% TAILOR-MADE

WHERE?

MOROCCO

WHEN TO GO?

JAN	FEB	MAR
APR	MAY	JUN
JUL	AUG	SEP
OCT	NOV	DEC

TAKE ME THERE



START YOUR ADVENTURE TODAY +44 (0) 1747 830950



*Natural High shines rays of adventurous light  
into some of the least explored, most exciting  
corners of the wider world*

FINANCIAL TIMES

## LET OUR SEASONED ESCAPE ARTISTS PLAN YOUR JOURNEY



ROD TETHER



CATHERINE RONAN



VANESSA JANION



GILLIAN ARAM



OLLY WILLIAMS



JEMMA LOVERIDGE

EMAIL US AT [ENQUIRIES@NATURALHIGHSAFARIS.COM](mailto:ENQUIRIES@NATURALHIGHSAFARIS.COM)

CALL US ON +44 (0) 1747 830 950

VISIT [WWW.NATURALHIGHSAFARIS.COM](http://WWW.NATURALHIGHSAFARIS.COM)

